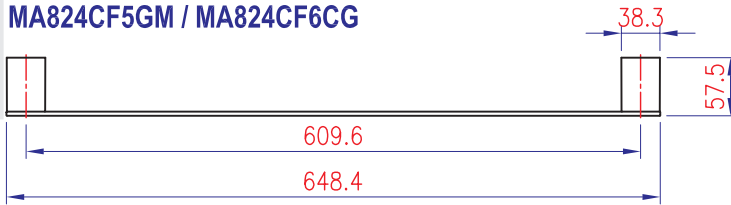
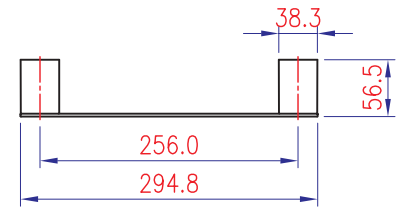


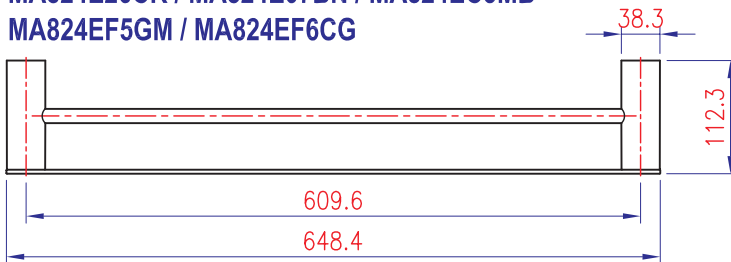
MA824C26CR / MA824C07BN / MA824CC3MB
MA824CF5GM / MA824CF6CG



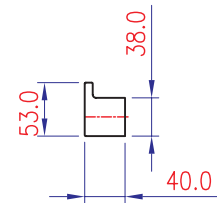
MA860D26CR / MA860D07BN / MA860DC3MB
MA860BF5GM / MA860BF6CG



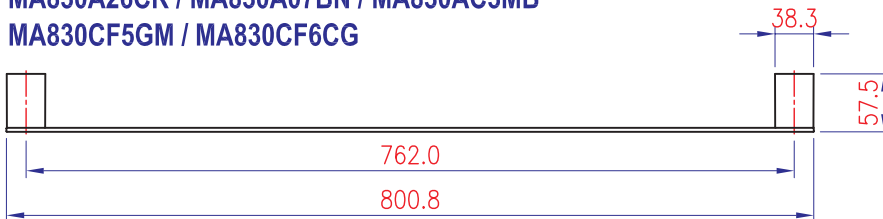
MA824E26CR / MA824E07BN / MA824EC3MB
MA824EF5GM / MA824EF6CG



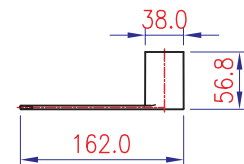
MA854-26CR / MA854-07BN / MA854-C3MB
MA854-F5GM / MA854-F6CG



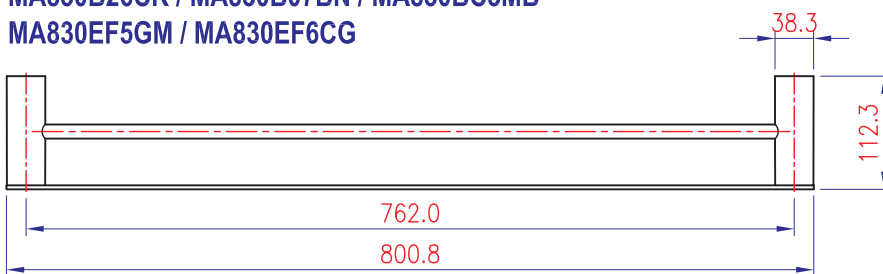
MA830A26CR / MA830A07BN / MA830AC3MB
MA830CF5GM / MA830CF6CG



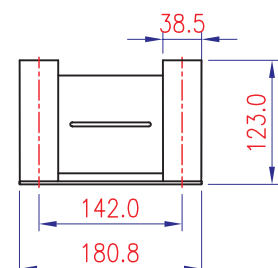
MA855D26CR / MA855D07BN / MA855DC3MB
MA855-F5GM / MA855-F6CG



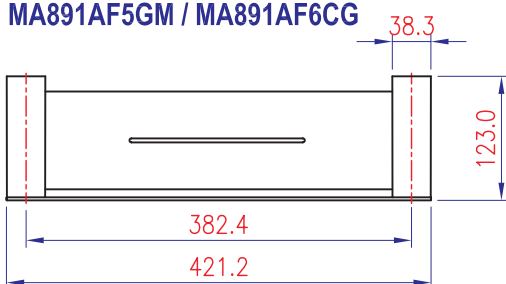
MA830B26CR / MA830B07BN / MA830BC3MB
MA830EF5GM / MA830EF6CG



MA859F26CR / MA859F07BN / MA859FC3MB
MA859FF5GM / MA859FF6CG



MA891A26CR / MA891A07BN / MA891AC3MB
MA891AF5GM / MA891AF6CG



CARE & MAINTENANCE

Clean with a soft cloth and a mild detergent or warm soapy water as necessary - rinse and dry after cleaning. Avoid using any abrasive or acid-based cleaning products.

WARRANTY

PRODUCT	COMPONENT	DOMESTIC USE	COMMERCIAL USE
Bathroom Accessories	Parts	7 years replacement parts, 1 year labour	3 years replacement parts, 1 year labour
	Finish (chrome)	7 years replacement parts, 1 year labour	1 year replacement parts & labour
	Finish (non-chrome/coloured)	5 years replacement parts, 1 year labour	1 year replacement parts & labour

This warranty does not cover against normal wear and will be voided if the product is misused or not installed in accordance with these instructions.

In the event this product is rendered obsolete and a replacement product is required, Oliveri Solutions Pty Ltd reserves the right to supply a product of equal substitution at their discretion.

Our goods come with guarantees that cannot be excluded under the Australian Consumer Law. You are entitled to a replacement or refund for a major failure and for compensation for any other reasonably foreseeable loss or damage. You are also entitled to have the goods repaired or replaced if the goods fail to be of acceptable quality and the failure does not amount to a major failure.

SERVICE

If the product requires servicing, please contact your installer (preferably the one who installed it). If the installer is satisfied that the problem is not due to poor installation, contact Oliveri's nominated Warranty Service Agent for assistance on:

Ph: (08) 8348 6444 (choose the after sales service & warranty option)

Email: warranty@oliveri.com.au

For full warranty information visit: <https://oliveri.com.au/service-and-warranty>

If a warranty service agent finds that the product is not at fault, Oliveri's nominated Warranty Service Agent reserves the right to pass on any call-out fee to the householder.