

Care Toilet Backrest

ACCBRRC

Please install the Toilet Backrest according to this guide.

IMPORTANT

Prior to installation, test fit the Backrest to ensure it does not obstruct the operation of the toilet seat. Ensure the wall fixing screws are anchored into masonry or timber. Do not install them directly into plasterboard. After installation, test the Backrest to confirm stability and correct operation.

WARRANTY This Backrest is warranted to be free from manufacturing defects for a period of 5 years replacement parts and 1 year labour.

Subject to the terms contained in the full warranty information available at <https://oliveri.com.au/service-and-warranty>, where a genuine manufacturing defect arises within the warranty period Oliveri will, at its election, repair the defect or replace the product.

Our goods come with guarantees that cannot be excluded under the Australian Consumer Law. You are entitled to a replacement or refund for a major failure and for compensation for any other reasonably foreseeable loss or damage. You are also entitled to have the goods repaired or replaced if the goods fail to be of acceptable quality and the failure does not amount to a major failure.

SERVICE

If the product requires servicing, please contact your installer. If the installer is satisfied that the problem is not due to poor installation, contact Oliveri's nominated Warranty Service Agent for assistance on:

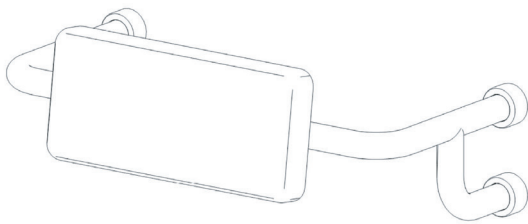
Ph: 08 8348 6444 (choose the after sales service and warranty option)

Email: warranty@oliveri.com.au

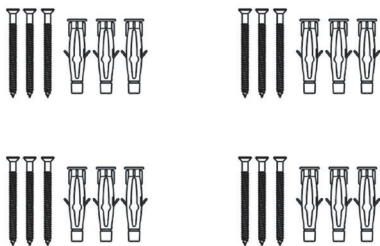
For full warranty information visit: <https://oliveri.com.au/service-and-warranty>

If a warranty service call finds that the product does not have a genuine manufacturing fault, our Warranty Service Agent reserves the right to pass on any call-out fee to the householder.

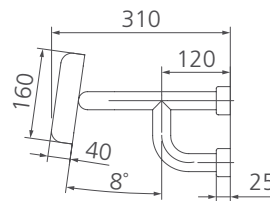
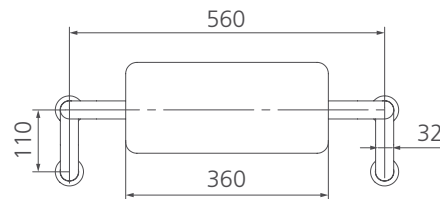
PARTS LIST



Toilet backrest assembly



Wall plugs and screws (includes 4 sets)



ACCBRRC

IMPORTANT: Never use abrasive or harsh chemical cleaners. Wipe with warm soapy water to maintain surface finish.

Installation Steps

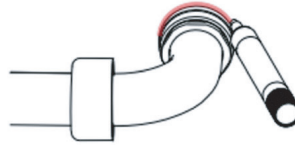
Preparation Tools: Drill driver, 8 mm drill bit, hammer, pencil and level.

1



Unscrew all end covers from their base plates and carefully slide them along the rail away from the fixing plates.

2



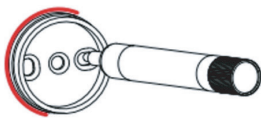
Position the Backrest on the wall in the required location. Check the Backrest is level and draw around each base plate.

3



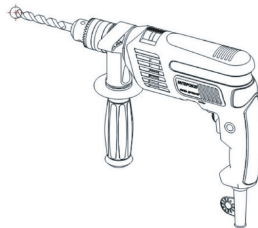
Unscrew the base plates from the fixing nuts and set aside the Toilet Backrest.

4



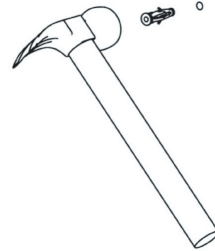
Put the base plates back in position according to the wall outlines. Mark each fixing screw hole location.

5



Drill 8 mm Ø holes to a depth of 70 mm at each marked screw location point.
NOTE Use an appropriate drill bit for the wall material.

6



Hammer a wall plug into each base plate fixing hole that has been drilled.

7



Tighten the screws, making sure the base plates are firmly secure and cannot move.

8



Locate backrest onto the base plates and gradually begin to screw down the fixing nuts.
NOTE Incrementally tighten nuts, alternating between each base plate until fully secure.

9



Carefully slide end covers back along the rail to each base plate and screw down securely.

IMPORTANT: Ensure the mounting wall is strong enough to support the grab rail under load. Test after installation.