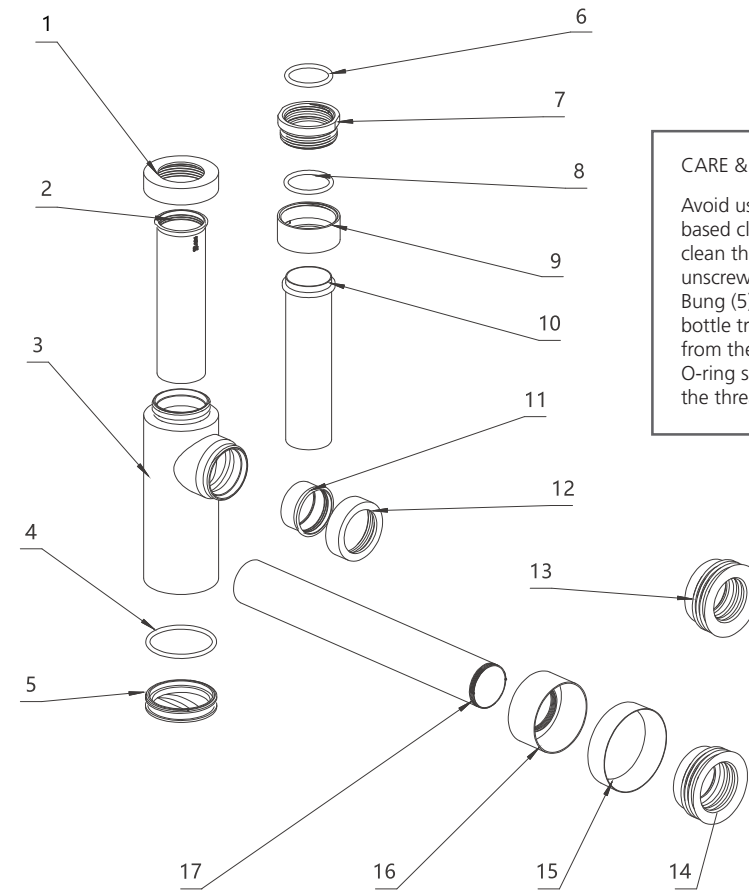


INSTALLATION

This bottle trap can be connected to a G 1½ (40 mm) basin waste fitting, or with use of the supplied adapter, to a G 1¼ (32 mm) basin waste fitting. **The bottle trap must be installed by a qualified plumber.**

1. Cut the DWV pipe so that it extends 15 mm to 20 mm out from the wall or vanity unit back panel. Ensure the pipe is cut square and has all burrs removed.
2. If the pop-up waste drain size is G 1¼ (32 mm), connect the Bottle Trap Inlet Pipe (10) to the pop-up waste outlet using the Adapter Nut (7) with Sealing Gasket (6) in place. If the pop-up waste drain size is G 1½ (40 mm), remove and do not use Adapter parts (6) and (7). Connect the Bottle Trap Inlet Pipe (10) to the pop-up waste outlet using only the Connector Nut (9), making sure Sealing Gasket (8) is in place. Do not tighten completely; adjustments are required during the installation process.
3. Screw the Sealing Cover (16) to the threaded end of the Outlet Pipe (17), then slide the Decorative Cover (15) over the Sealing Cover (16) and choose the appropriate diameter Sealing Ring (13) or (14) to insert into the Sealing Cover (16).
4. Insert the assembled Outlet Pipe parts (17), (16), (15) and seal (13) or (14) into the DWV pipe until they are fully inserted, and then cover them with the Decorative Cover (15).
5. Loosen the Compression Nut (1), and adjust the height of the Bottle Trap Inlet Pipe (10) to align with the height of the DWV pipe. **Note:** Adjust height to ensure the Outlet Pipe (17) will have a drop of at least 1.5° to allow waste water to flow (according to AS/NZS 3500.2).
6. Rotate the Bottle Trap Body (3) so the outlet elbow faces the DWV pipe in the wall. Ensure the Sealing Ring (11) and Compression Nut (12) are installed in the Bottle Trap Body (3). To determine the required length of the Outlet Pipe (17), position the assembled Outlet Pipe (17), while installed in the DWV pipe, along side the Bottle Trap Body (3) and mark the Outlet Pipe (17) at a point 18 mm longer (past) the front edge of the Compression Nut (12) to ensure sufficient length for sealing. Remove the Outlet Pipe assembly from the wall and use a pipe cutter to cut the Outlet Pipe (17) at the marked location and remove burrs.
7. Insert the cut Outlet Pipe assembly into the Sealing Ring (11) and install it onto the Bottle Trap Body (3) using the Compression Nut (12). Do not tighten completely.
8. Reinstall the Bottle Trap assembly into the DWV drain outlet. Adjust the position and height of the Bottle Trap, ensuring the Outlet Pipe has the required fall angle for correct drainage. **Tighten all connections.**
9. Fill the basin with water, test its functionality, and check for leaks.



CARE & MAINTENANCE

Avoid using abrasive or acid based cleaning products. To clean the bottle waste trap, unscrew the large threaded Bung (5) at the base of the bottle trap. Clean any waste from the bottle trap, clean the O-ring seal (4) and reassemble the threaded Bung (5).

